

Cruise Dartmouth

CRUISE PORT IN SOUTH WEST ENGLAND



Arrival to Remember

A still morning...
the gap in the cliffs barely visible...
guided by the pilot...
the castles come into focus.

A narrow gap, shear on both sides...
looking down on the ancient forts...
the bend in the river opens.

Suddenly, ahead is the town, colourful in
the dawn's light and overhead the college.

Through the ancient port...
turning between oak woodlands...
and moored – raring to explore!

Undiscovered Gem

Our port is an undiscovered gem. Exclusive but accessible, Dartmouth is a picturesque and historic town, tucked into a deep ria – a drowned glacier valley, which has formed a deep and sheltered harbour and a natural playground to explore.

Dartmouth

is a unique and amazing cruise port for so many reasons...

An arrival as memorable as any in the world.

Yes, we'd rate it up there with Geiranger, Sydney and Venice as it used to be and so will your passengers.

The ship is the centre of the action

Small and mid-sized ships moor in the centre of town, less than a minute's tender ride to the centre and the ship becomes the focus of the view.

Tours... without the coach

Are your passengers fed up of starting each morning climbing the steps onto yet another generic bus to take them miles inland? In Dartmouth, most of our tours can leave the town by steamboat, ferry, steam train, open top bus, rib, paddleboard, sailing trawler or coastal footpath.

Iconic destinations, unique experiences

So many options – from Agatha Christie's Greenway and Britannia Royal Naval College, to driving a steam train, or exploring the wilds of Dartmoor, or leaping from limestone cliffs. In easy range are three UNESCO sites.

A Millennium of history to discover

From the departure point of the crusades, to the Mayflower, Chaucer, Elizabethan explorers and on to the first steam engine, first computer, Agatha Christie and D day, there are so many stories to tell and historic places to see.



Marquee Destination

A small-town, but world-renowned
Stunning vistas Historic quays and streets.

A shopper's Paradise:

111 shops, galleries & boutiques,
as well as 80 cafes, pubs, bars & restaurants

An Historian's Delight:

The Mayflower, Crusades, D Day,
Royalty, Agatha Christie

A Playground For Everyone:

Walking, boating, exploring, culinary treats

The Town



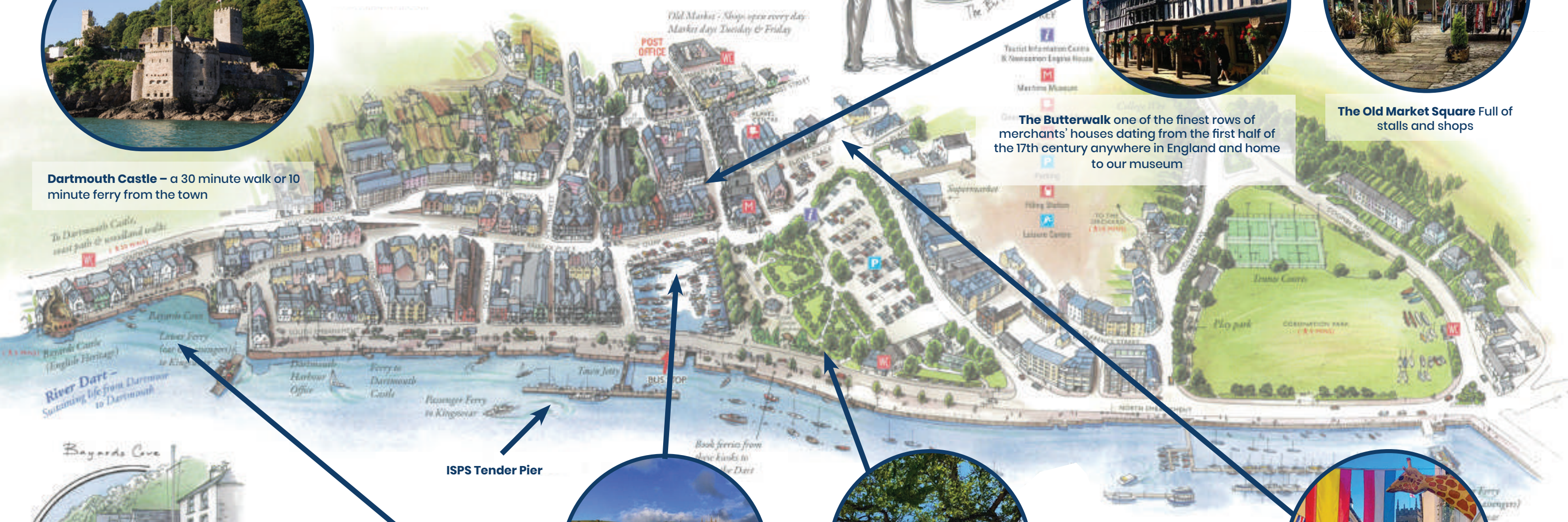
Dartmouth Castle – a 30 minute walk or 10 minute ferry from the town



The Butterwalk one of the finest rows of merchants' houses dating from the first half of the 17th century anywhere in England and home to our museum



The Old Market Square Full of stalls and shops



Historic Bayard's Cove
Its cobbled quay is a frequent film location and was departure point for the Mayflower



The Boatfloat
Our harbour within a harbour, surrounded by shops and pubs



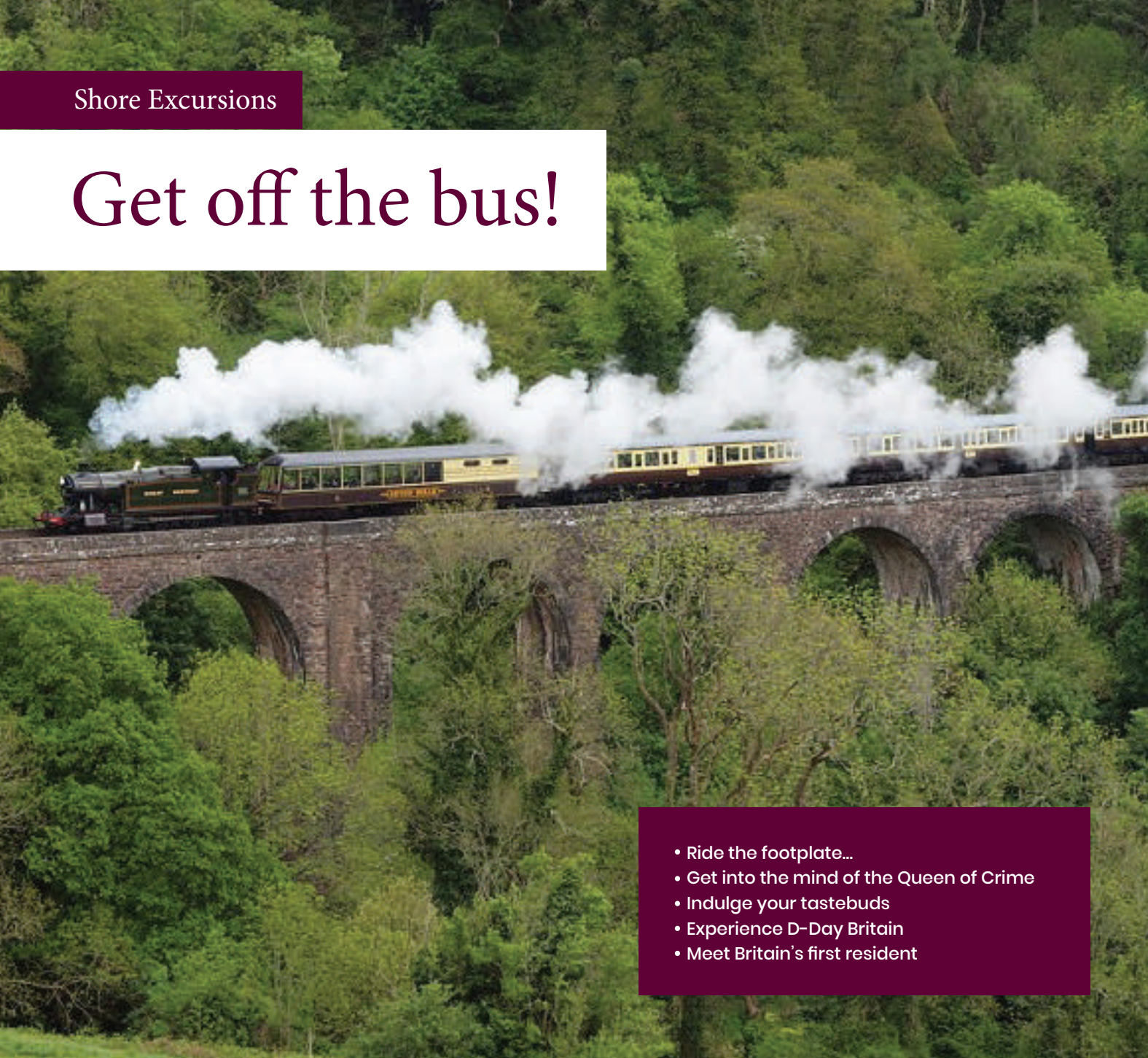
The Embankment
Cafes and benches to enjoy the view of your ship



Foss Street
Prettiest and busiest of our shopping streets, full of galleries, boutiques and specialist shops



Get off the bus!



- Ride the footplate...
- Get into the mind of the Queen of Crime
- Indulge your tastebuds
- Experience D-Day Britain
- Meet Britain's first resident



UNESCO coasts
Moorland Wilderness
Tranquil creeks

Great tours... without the coach ride

Every shore excursion starts and ends with a tedious journey on a coach, right? Wrong! Unique to Dartmouth, most of our tours – boutique or mass-market – don't set foot on a coach, or only use one for a very short part of the journey, instead using Dartmouth's unique selection of paddle steamer, steam train, trip boats, ferries, kayaks, ribs or footpaths to get to their destination.

This gives your guests a unique experience, increases tour participation and makes Dartmouth an even more memorable port of call.



Huge variety

We pride ourselves on being able to offer a very wide range of tours, most of which can be tailored to meet your exacting requirements. Many of the tours have very low minimums, meaning that even the smallest ship can offer a great range, tailored to your guests. The following pages show a selection of the tours, but many more options and combinations are available.

Iconic Tours

High capacity, great value, always highly rated, but still unique to Dartmouth, these tours show off the icons of the area.

Agatha Christie’s Greenway

Just a scenic 30 minute ferry ride from Dartmouth is the gorgeous riverside home of the Queen of Crime. Greenway House is displayed in its 1930s splendour, though the library includes a frieze painted by US servicemen who were stationed here in WWII. The garden winds down to the estuary and both it and the house featured in several of Christie’s mysteries.

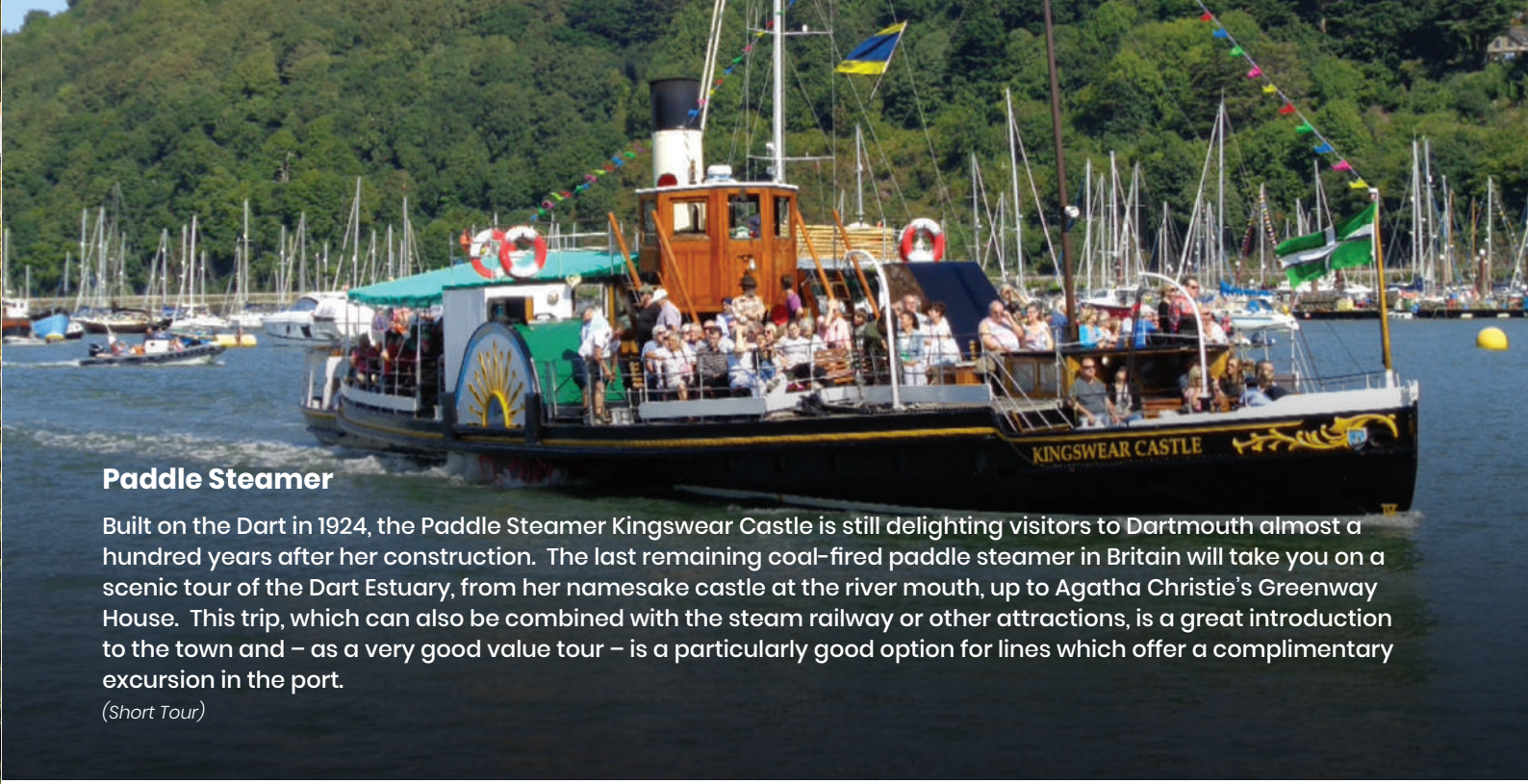
(Half Day)



Paddle Steamer

Built on the Dart in 1924, the Paddle Steamer Kingswear Castle is still delighting visitors to Dartmouth almost a hundred years after her construction. The last remaining coal-fired paddle steamer in Britain will take you on a scenic tour of the Dart Estuary, from her namesake castle at the river mouth, up to Agatha Christie’s Greenway House. This trip, which can also be combined with the steam railway or other attractions, is a great introduction to the town and – as a very good value tour – is a particularly good option for lines which offer a complimentary excursion in the port.

(Short Tour)



D Day – the unknown story

Exercise Tiger was the rehearsal for the D Day landings and took place on the beach at Slapton, near Dartmouth, where the whole area was evacuated. This tour tells the tragic story of how the exercise went badly wrong, but set up Operation Overlord for Success.

(Half Day)



Devon by Steam Train & River Boat

This award winning trip takes you on a 90 minute cruise along the stunning Dart Estuary, to the historic and quirky market town of Totnes. After free time here, a coach or open-top bus will take you through the Devon countryside to Paignton, where Brunel’s steam train will be awaiting, running along the coast, then over high viaducts to join the Dart Valley. Arriving in Kingswear, a ferry will return you back to the tender landing.

(Half / Full Day)



Hallsands by RIB

This village at the foot of the high cliffs of Start Bay was destroyed in a gale in 1917 and now the ruins that remain are only visible from the sea, on this boat trip which also sees lots of wildlife.

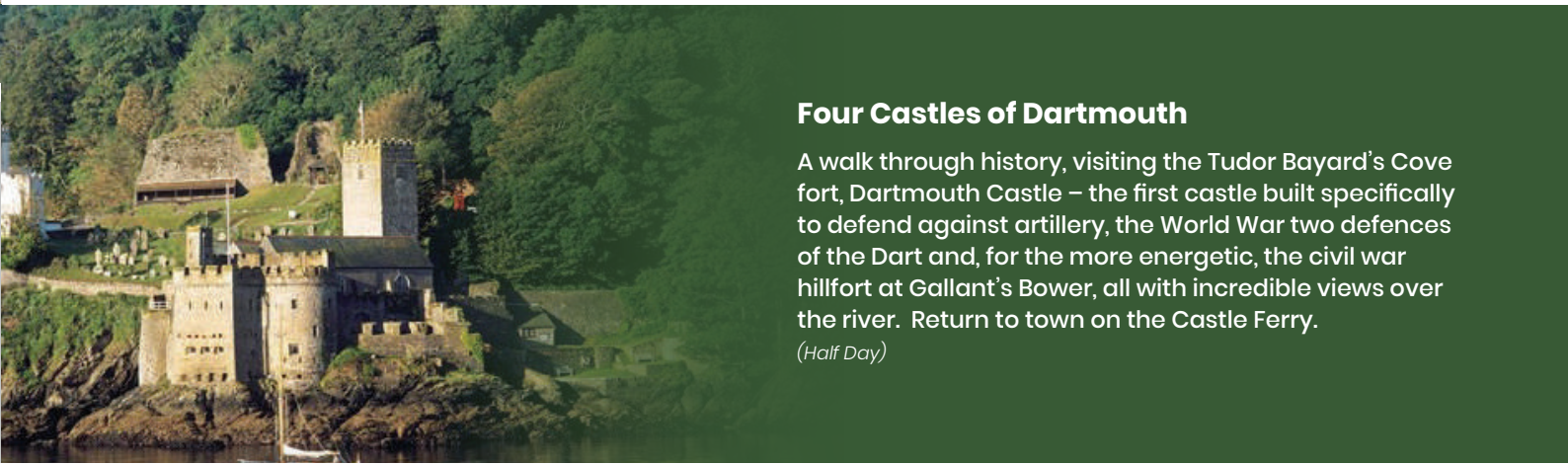
(Short Tour)



Four Castles of Dartmouth

A walk through history, visiting the Tudor Bayard’s Cove fort, Dartmouth Castle – the first castle built specifically to defend against artillery, the World War two defences of the Dart and, for the more energetic, the civil war hillfort at Gallant’s Bower, all with incredible views over the river. Return to town on the Castle Ferry.

(Half Day)

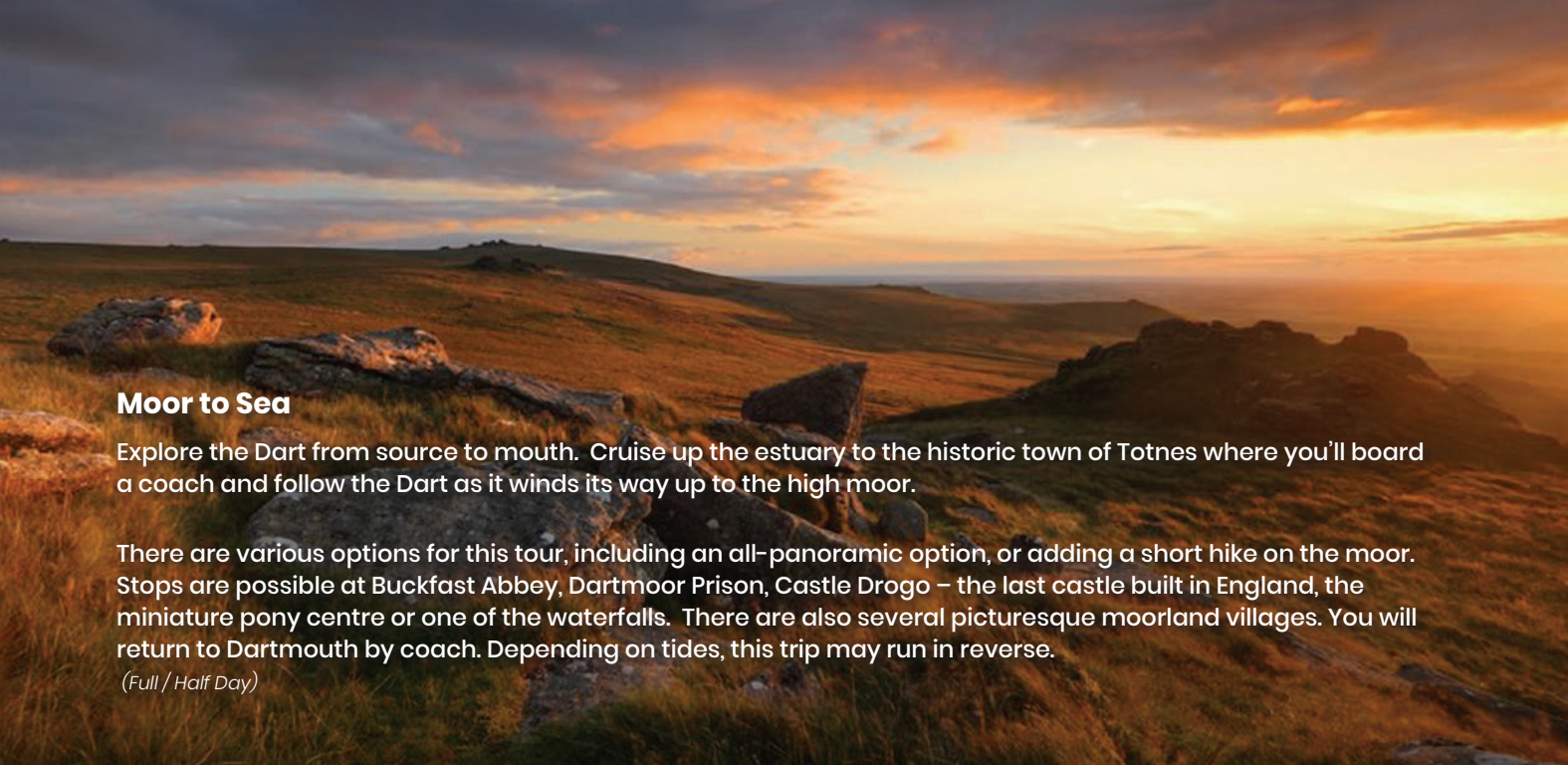


Torbay by boat and train

A coastal cruise along the UNESCO global geopark cliffs will take you to the picturesque fishing port of Brixham. After exploring the town, you will move on to the resort of Paignton, before catching a steam train to take you back to Dartmouth.

(Half Day)





Moor to Sea

Explore the Dart from source to mouth. Cruise up the estuary to the historic town of Totnes where you'll board a coach and follow the Dart as it winds its way up to the high moor.

There are various options for this tour, including an all-panoramic option, or adding a short hike on the moor. Stops are possible at Buckfast Abbey, Dartmoor Prison, Castle Drogo – the last castle built in England, the miniature pony centre or one of the waterfalls. There are also several picturesque moorland villages. You will return to Dartmouth by coach. Depending on tides, this trip may run in reverse.

(Full / Half Day)

Boutique tours

Ultimate experiences for small groups, that will be remembered for ever...

Sail trawler regatta

A fleet of these powerful sailing vessels were built on the Dart around the turn of the 20th century. Now, just a few remain and you can join them for a coastal cruise, or even help the crew to sail their historic craft in a match race with a difference.

(Half Day / Short Tour)



Dartmouth Walking Tour

The perfect introduction to the town, a 90 minute to 2 hour stroll around the cobbled streets, historic buildings and picturesque quays of our town, listening to the stories of this timeless place.

(Short Tour)



Prehistoric Devon

Torbay is a UNESCO Global Geopark and one of its most celebrated locations is Kents Cavern – a huge system of underground caves you can explore, following in the footsteps of Britain's first known resident – the caves are home to a 40,000 year old human jawbone fossil.

(Half Day)

Drive a steam train

Experience the thrill of driving and firing a real Great Western Railway steam locomotive, under the watchful eye of our experienced footplate crews. Your trip will include time exploring the engine workshops and journeys both on the footplate and in a carriage.

(Half Day)



Britannia Royal Naval College

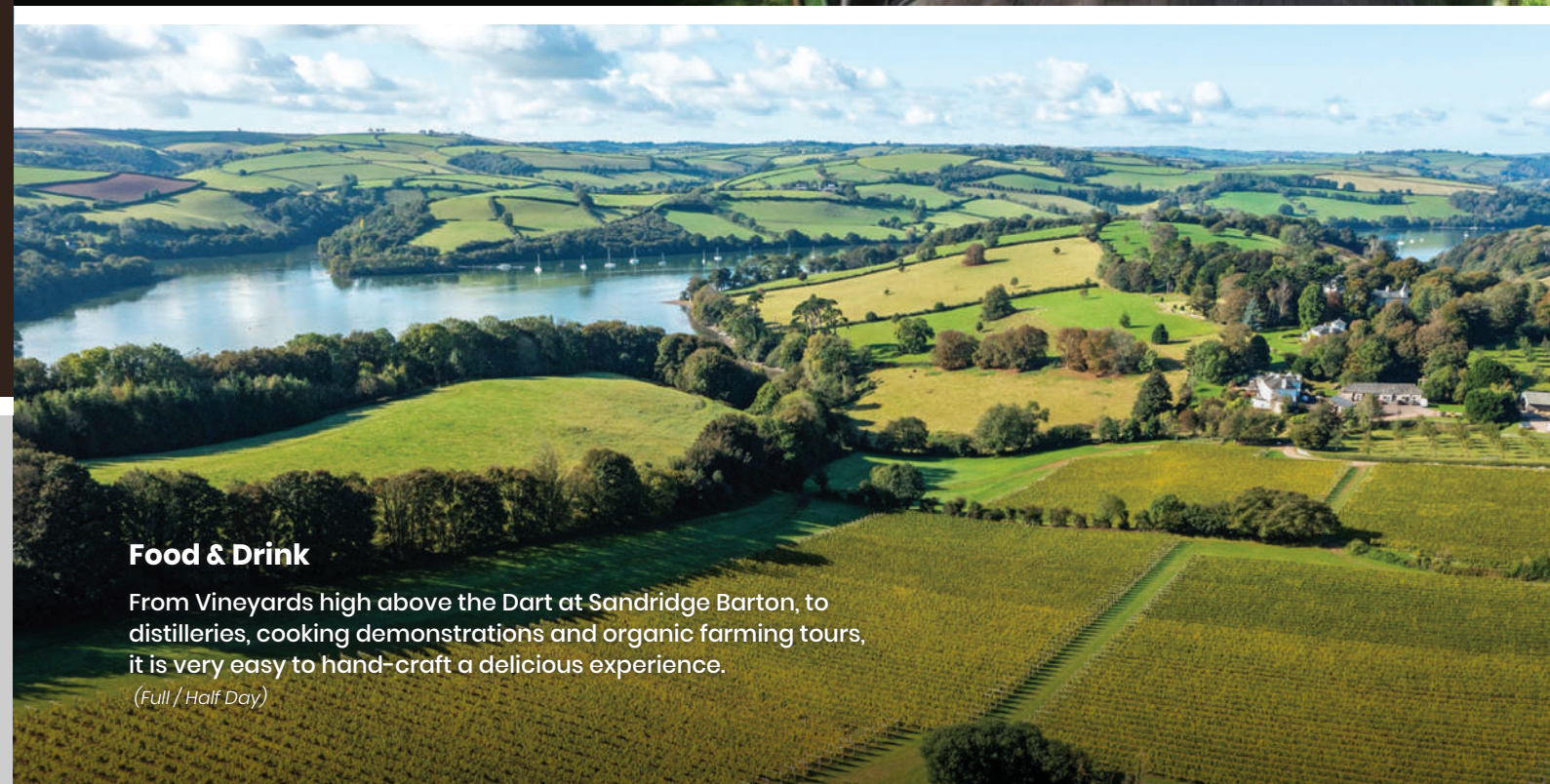
Every British Naval Officer receives their training in this spectacular building, which dominates the town of Dartmouth. It was the place where Queen Elizabeth II first met Prince Phillip and the tour will take you through the heart of this historic location.

(Short Tour)

Food & Drink

From Vineyards high above the Dart at Sandridge Barton, to distilleries, cooking demonstrations and organic farming tours, it is very easy to hand-craft a delicious experience.

(Full / Half Day)



Active tours

Walking, paddling and even Coasteering – more active tours for your more adventurous guests.

South West Coast Path

Originally used by coastguard officers, protecting the coast, the section of the coast path around the Dart is particularly spectacular and there are a wide range of different length walks that can be offered.

(Half Day)

Gardens to Explore

Just a few minutes from the ship is Coletton Fishacre – a cliffside garden and Art Deco home to explore. More active guests can walk back to Dartmouth along the natural gardens of the clifftops.

(Half Day)



Paddle Adventures

The Dart is an amazing estuary for paddlesports, with hidden creeks, beautiful wooded reaches and riverside Inns to refresh weary paddlers.

There are a wide range of options available, from large 12 person Canadian Canoes, to stand-up paddleboards, all with expert guides to keep you safe and introduce you to the sights and wildlife.

(Half Day / Short Tour)



Dartmoor Pony Trekking

Remote and unspoiled, Dartmoor is southern England's final wilderness. What better way to explore the land of infinite horizons than on horseback.

(Full Day)



Coasteering

The limestone cliffs of the UNESCO global geopark in nearby Torbay give great opportunities for coasteering – exploring caves, scrambling over rocks and leaping from cliffs into the clear, deep water – it is quite an experience.

(Half Day)



Rewilding

The glorious Sharpham Estate is home to a fantastic project to restore 150 acres of farmland to their natural state. You can visit to study the wildlife, or assist with practical conservation tasks.

(Half Day)



Sea Fishing

Spend a few hours with rod and line, fishing the coast, wrecks, reefs or skerries bank for mackerel or bass.



Golf

There are a number of stunning courses nearby, including the 7200 yd, par 72 championship course, designed to challenge golfers of all ability, as well as the coastal links at nearby Churston, looking out over Torbay.

(Half Day)

Further Afield

Just an hour or so's coach ride away, these tours show off Devon's highlights.



Buckfast Abbey & Dartmoor

Take a coach to the Benedictine abbey at Buckfast. Enjoy the peach of this tranquil site, before heading onto Dartmoor, where there are a number of options for this tour.

(Half / Full Day)



Eden Project

Over the border in Cornwall, and hidden in an old china clay quarry is one of the wonders of the modern world. The Biomes at Eden hold 'the world's largest rainforest in captivity' as well as temperate and Mediterranean climates.

(Full Day)



Tamar Valley Mining World Heritage Site

A coach ride through the glorious Devon countryside will take you to this fascinating area of socio-industrial history. You can discover how the wealth of mining led to the historic town of Tavistock, then descend into one of the mines at Morwellham, before exploring the estate at Cotehele – stuck in an Elizabethan time-warp.

(Full Day)



Sherlock Holmes' Dartmoor

Explore Dartmoor's more mysterious side, that inspired Arthur Conan Doyle's classic Hound of the Baskervilles, from the notorious prison, to the ruined church famed for ghostly hounds that inspired the story, to the great Grimpen mire.

(Half / Full Day)



Burgh Island

Setting for Agatha Christie's 'And Then There Were None' and 'Evil Under the Sun', this Art Deco hotel is only accessible by Sea Tractor and makes the perfect setting for afternoon tea as part of a literary tour of the county.

(Half / Full Day)



Historic Exeter

Our ancient Roman cathedral city – on the banks of the River Exe, a classic British city with a stunning cathedral and centuries of history to explore.



Jurassic Coast

England's first natural World Heritage Site, the cliffs and coastline of the Jurassic Coast span 200 million years of geology – the Triassic, Jurassic and Cretaceous periods. The soft sandstone and limestone cliffs are fossils from another era, when deserts were drowned beneath tropical seas. From Exmouth and Sidmouth, the coast can be explored on foot or by boat.



Stately Homes

There are a selection of mansions and castles to discover within easy reach of Dartmouth, from Powderham Castle – home of the Earls of Devon, Majestic Saltram, or Castle Drogo – the last castle built in Britain.

Specialist Cruises

Theme cruises, evening events, charters – whatever your cruise needs, we can suggest something to amaze your guests...

Options include Gardens, Literary, Islands, Golf, History, World War II, Explorers, Wilderness, Activity, Nature, Conservation, Music, Fine Dining, Events...

Navigation



Swinging a 180m vessel off Sandquay

Pilotage

Exact procedure will depend on vessel size and tide – on occasion it may be preferable to swing on departure.

The pilot will normally embark slightly to seaward from the charted pilot station, to give adequate time for a pilot / master exchange. Pilot vessel is Mallard – black hull, orange superstructure. Boarding speed typically 6-8 knots, pilot ladder 1.5m above the water.

The ship follows the sector lights into the river, passing through the narrow entrance between the castles, turning to port then starboard to enter the harbour, with spectacular views of the town throughout. The ship will pass beyond the mainstream mooring buoys and cross the Higher Ferry, turning in approx. position: 50 21.6 N 003 34.5 W.

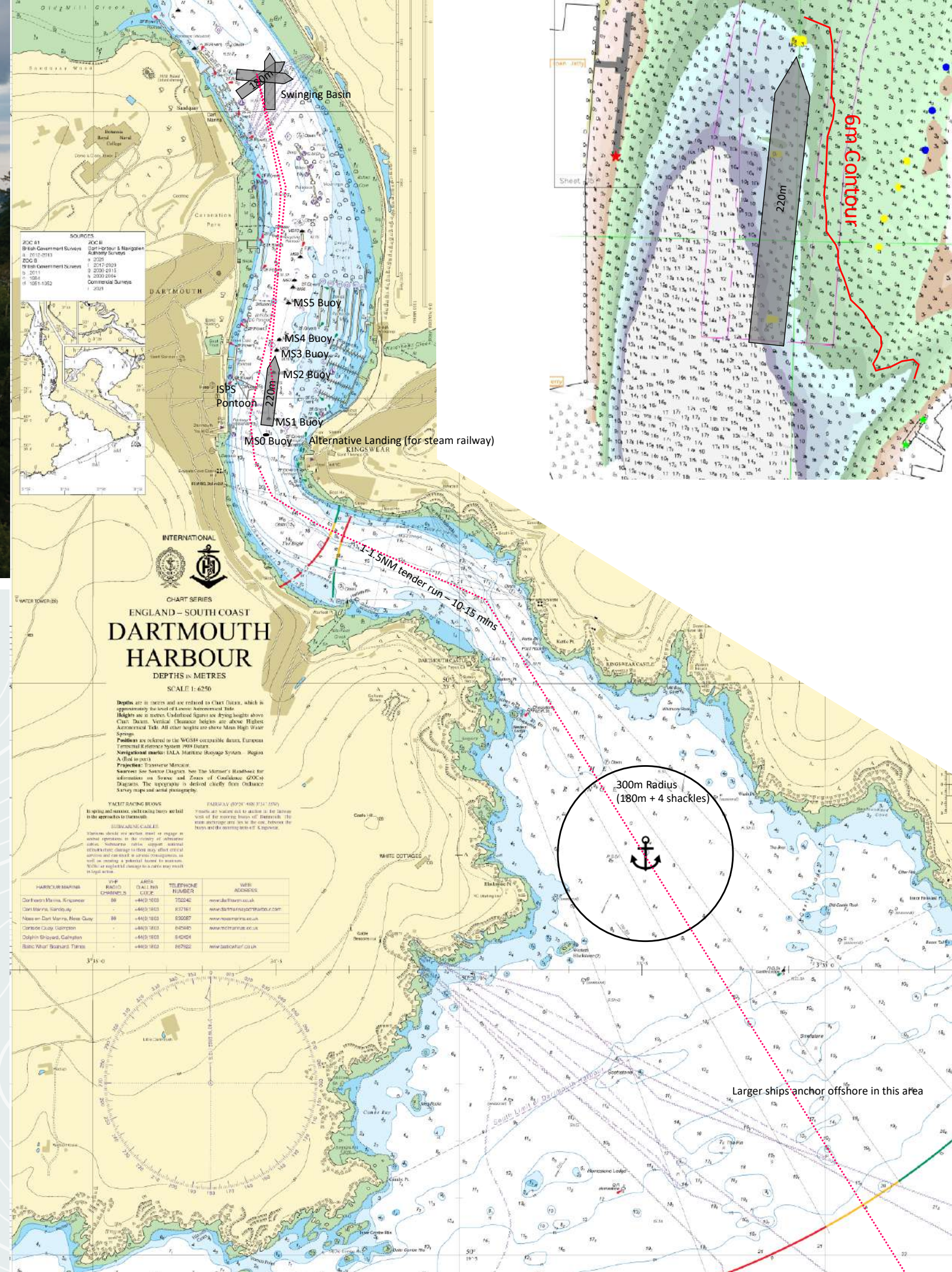
The ship will then return to the mainstream moorings and make fast.

Larger ships above 180m can't swing in the river, so will need to go astern out of the river and swing offshore. Ships of more than around 220m cannot enter the river, so anchor offshore and tender in. Exact sizes depend on manoeuvrability of the ship and the exact tidal conditions.

Tugs are available, but on long notice as they come from other ports – the need for tugs will normally be determined at the time of booking.



MS The World entering the harbour astern, escorted by a tug



Larger ships anchor offshore in this area



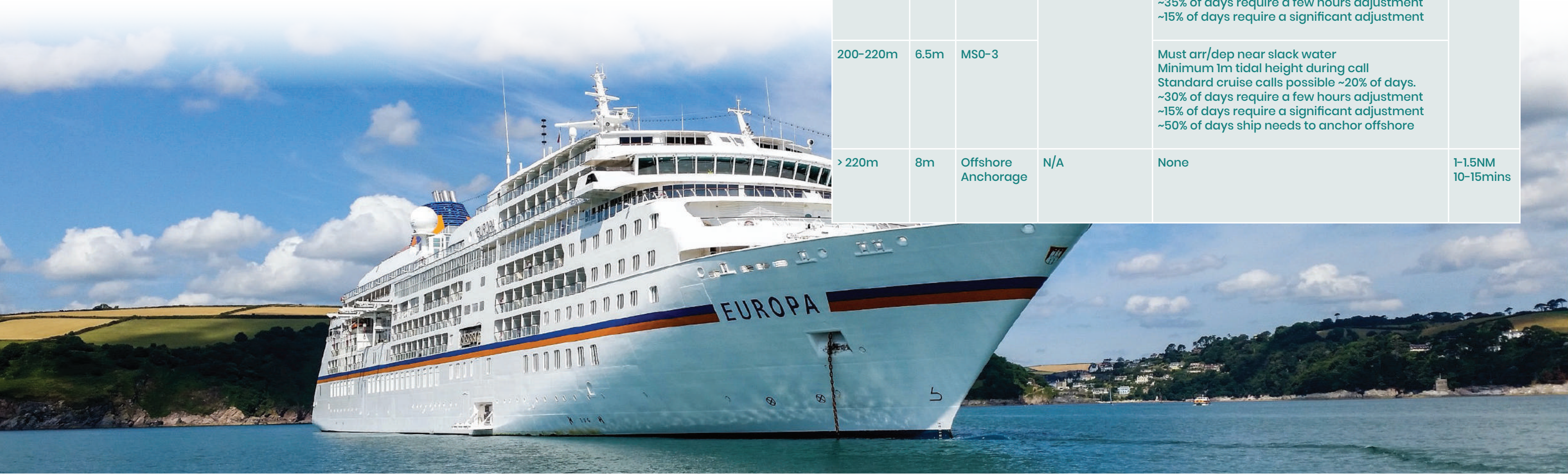
The Berths

Mainstream Buoys

Vessels of under 220m in length will moor between our Admiralty Buoys in the mainstream of the river, less than a minute's tender run from the tender pier. There is 7m of water on these buoys at chart datum.

Offshore Anchorage

Just offshore of the river mouth are a number of possible anchorages, depending on vessel length and prevailing conditions. The tender run is through the deep and spectacular entrance channel and takes 10-15 minutes.



Ship Size Limits

The below table gives an indication on access restrictions for various size ships. This is just an indication and depends on ship manoeuvrability and the details of the tides on the day. Please ask for more details for a specific call or vessel.

Ship Length	Draft	Berth	Swing	Tidal Restrictions	Tender Distance
0-90m	4.5m	MS1-2 or MS3-5	In river Sandquay on arrival or departure	None	200m 2 mins
90-140m	5m	MS1-3		Must swing near slack water (high or low) Normally standard cruise calls (early AM-late PM) OK ~20% of time may need a few hours adjustment	
140-180m	5.8m	MS1-3 / 1-4		Must swing near high water Standard cruise calls possible ~50% of days. ~25% of days require a few hours adjustment ~25% of days require a significant adjustment	
180-200m	6m	MS0-3	Offshore	Must arr/dep near slack water Standard cruise calls possible ~50% of days. ~35% of days require a few hours adjustment ~15% of days require a significant adjustment	
200-220m	6.5m	MS0-3		Must arr/dep near slack water Minimum 1m tidal height during call Standard cruise calls possible ~20% of days. ~30% of days require a few hours adjustment ~15% of days require a significant adjustment ~50% of days ship needs to anchor offshore	
> 220m	8m	Offshore Anchorage	N/A	None	1-1.5NM 10-15mins

Going Ashore



Tender Pontoon

The main tender pontoon is the south end of the Town Jetty 50 21.03N 003 34.38W. Two berths are available for tenders, on the inside and outside of the jetty. The pontoon is a floating jetty with a freeboard of 1m, with ramped access to the shore. An additional low float is secured alongside this jetty for cruise ships using Zodiacs.

Ample cleats are provided and the pontoon is fully lit, well fendered and fitted with handrails. A tent is provided to give shelter. There is CCTV coverage of the whole facility.



Tour departures

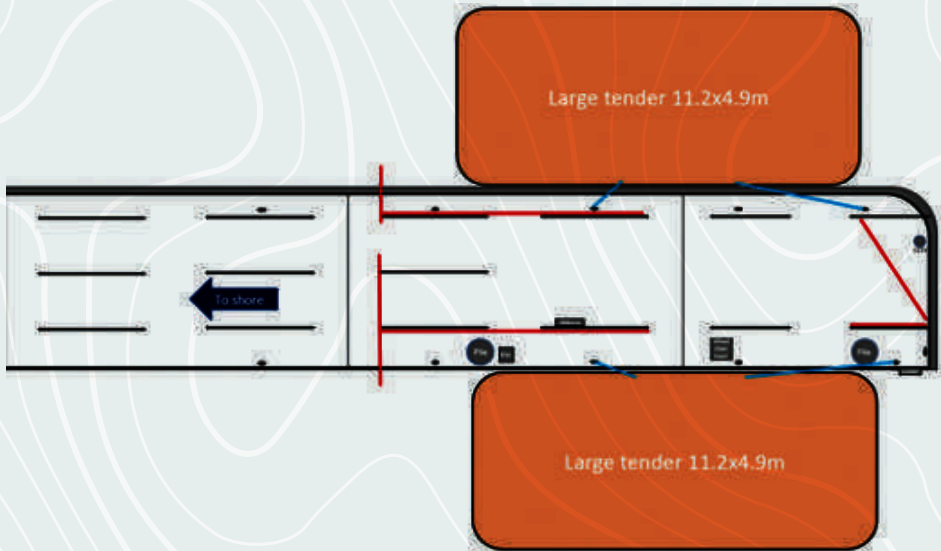
The Town Jetty is also the departure point for most ferry, paddle steamer and steam train tours, with ample berths available for these vessels. Coach and walking tours leave from the top of the bridge from the jetty. Ferry departures can also run directly from the ship's side.

Coach space is limited, so it is important that larger ships in particular take advantage of the non-coach based tours, to avoid queuing. We can work with your tour operators to make sure everything runs smoothly.

Guest & Crew Facilities

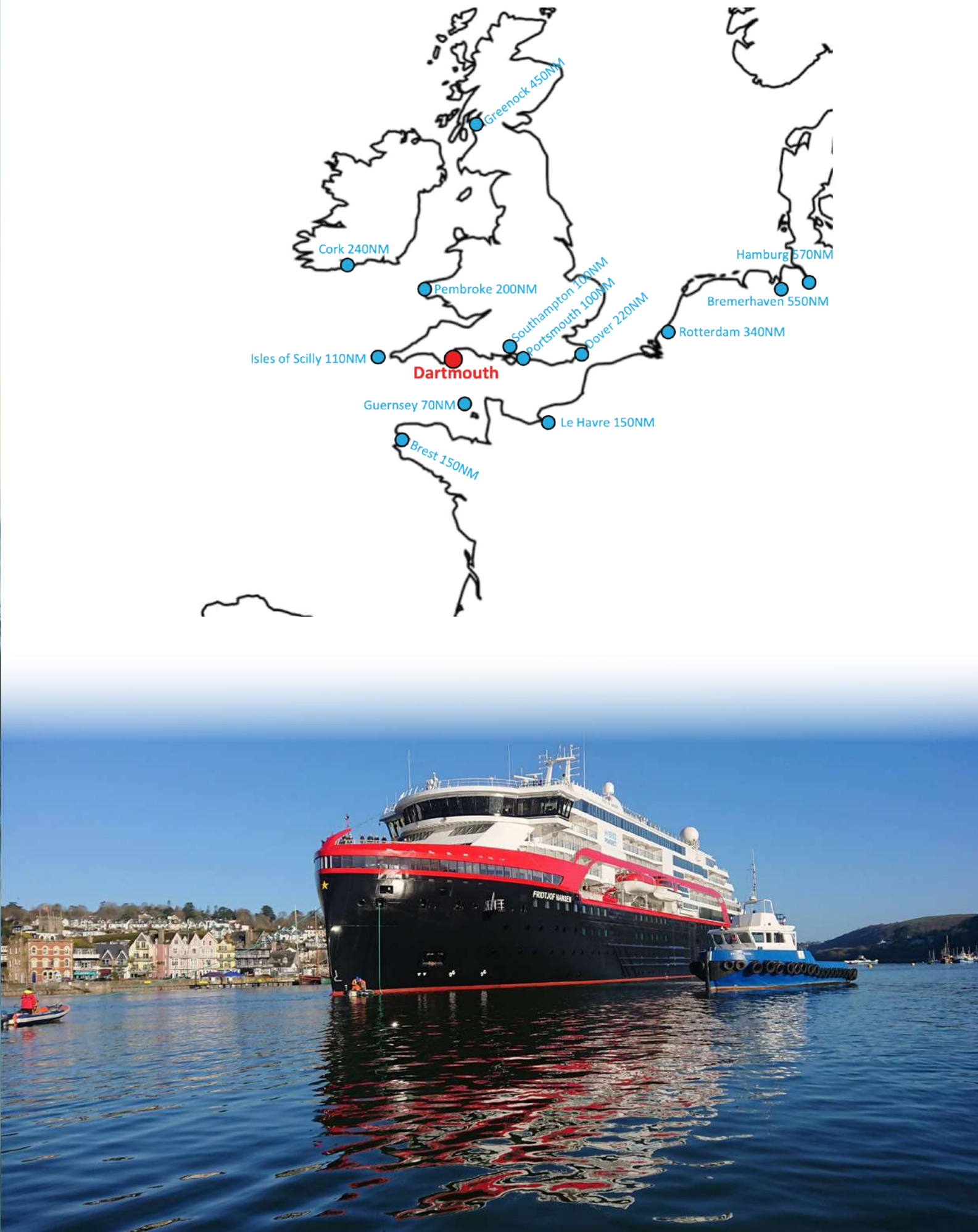
Tourist information is provided on the jetty for arrivals, with every guest welcomed by our team. There is also a full information centre nearby.

At the top of the bridge from the Jetty to the shore there is a taxi rank, public bus stop, bank with ATM, cafés and ice cream / takeaway. Wifi is available. Just a few steps away are public toilets, a supermarket, a chemist and the harbour office, as well as the many shopping streets.



Useful Information

Speed Limit	6 Knot
Pilotage Time	90 minutes from Pilot onboard to 1st tender. 60 minutes without swing on arrival.
Tugs	Various options available with around 48 hours notice. Larger vessels using the mainstream moorings require a tug which will be advised by Dart Harbour at the time of booking the call.
Security	Dartmouth is certified to ISPS standards by the UK MCA. Two security guards are provided for each call, more for large vessels. Searching is normally done onboard the ship
Agents	Services available from all major UK agency providers
Ship's tenders	May be used. The pontoon can be adapted for standard tenders or zodiacs
Shore tenders	Shore tenders are available. These range from 12-400 passenger capacity from various operators. We would normally recommend 100-150 passenger capacity boats. All operators have appropriate licenses from the MCA and/or Dart Harbour
Alternative landing points	It may be possible to land shore excursions directly at Greenway Quay (for Agatha Christie's Greenway House) – approx 30 mins tender run, or at Kingswear (for the Steam Railway). Due to ISPS regulations, passengers returning to the ship from these locations should go via the Town Jetty security area unless prior arrangements are made for additional security
Watersports from Ship Marina	Cruise lines are welcome to run kayaking and paddleboard type activities from marinas onboard the ship if equipped. It should be noted that Dartmouth Harbour is very busy with leisure traffic, so we will ask to see your risk assessment for this. We can provide paddle trail suggested routes. Other watersports types, such as submarines, jetskis and sailing can normally be accommodated and would be subject to a risk assessment. We can suggest suitable locations for these tours.
Helicopter tours	Helicopter tours from a shipboard helipad are normally permissible with sufficient notice and permission from the Civil Aviation Authority and Royal Navy, which Dart Harbour can help to obtain. A shore helipad is also available.
Garbage	Limited garbage collection is available by barge. This will be charged per skip, along with a fee for the barge
Bunkering	Limited quantities of MGO are available by barge Potable water is not available
Maintenance	Crew drills, fresh water wash down, touch up painting, paint raft and hot work are all available, with permission from the harbour office.
Environmental restrictions	No discharge of untreated black / grey water in the river. Ballast operations only with permission. Vessels with open-loop scrubbers should request permission to use them in the river. Vessels are requested to avoid visible smoke where practical.
Risk Assessment	Our Risk Assessment for Cruise Operations can be provided on request
Emergency Response	Torbay Hospital is around 10 miles away, with all facilities Dart Harbour has a cruise ship emergency and evacuation plan in place. Local fire, medical and security services are all regularly exercised in cruise emergency response





Dart Harbour

www.dartharbour.org

✉ harbourmaster@dartharbour.org

☎ +44(0)1803 832237

6 Oxford Street, Dartmouth, TQ6 9AL, UK