

281800 E

281900 E

282000 E

282100 E

58600 N

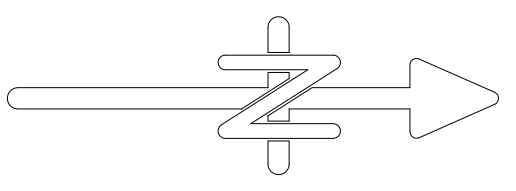
58500 N

281800 E

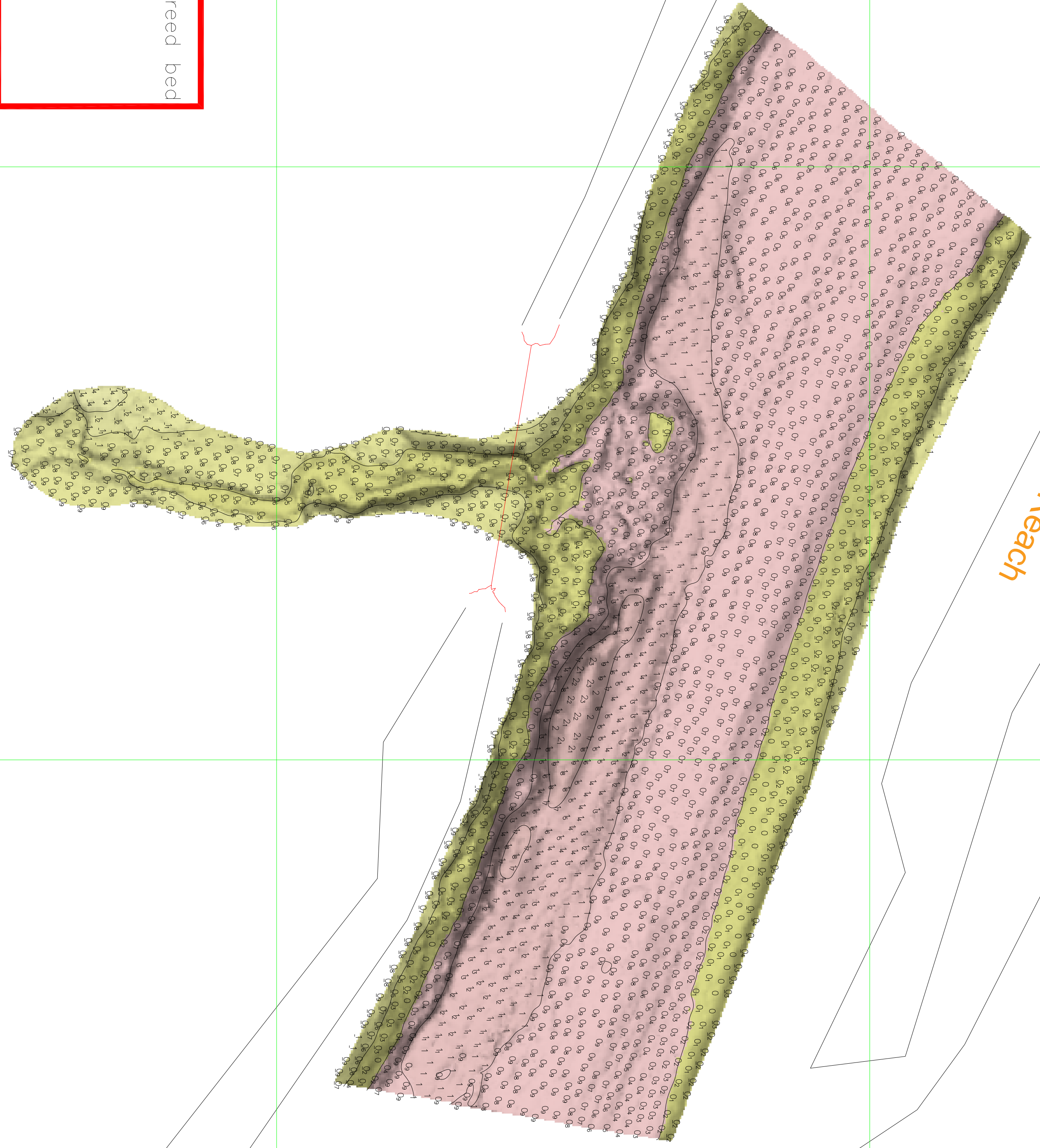
58400 N

281900 E

282000 E



Home Reach



Entrance width: Reed bed to reed bed  
2010: 41.6 metres  
2013: 41.6 metres  
2021: 41.97 metres (LiDAR)  
2023: 41.99 metres (LiDAR)

**SHORELINE SURVEYS LTD**

Hydrographic — Geophysical — Topographic  
Merford Hall, Meriton, Dorchester, Dorset DT2 8BA  
Telephone: +44 1305 848821 or +44 7950 038317  
enquiries@shorelinesurveys.com www.shorelinesurveys.com

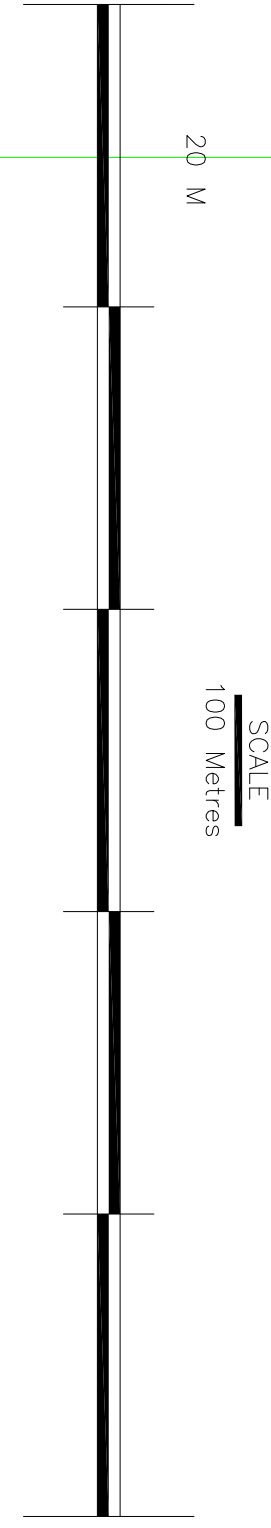
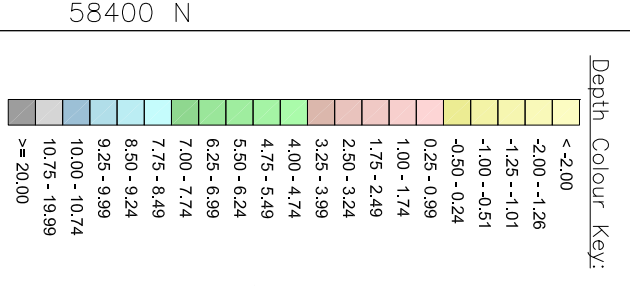
**CLIENT:** Dart Harbour & Navigation Authority  
**PROJECT:** Annual Survey 2023  
**TITLE:** Bathymetric and LiDAR survey of Dartmouth Harbour, Hole in the Wall

**NOTES/REVISIONS:**  
Contours are only shown at 1m intervals. Contours are not shown where they do not exist. Contours are not shown where they are not required.

Project No: 2153 Scale: 1:500  
Drawing No: 08 Date: 18/01/23  
Surveyed by: PLK/JF  
Drawn by: TGT  
Checked by: HS  
00 NOT SCALE  
Dart Harbour

**MULTIBEAM SURVEY**

Conducted using a Simrad EK60 echosounder with a 7° beam. Data was collected at 100m depth. The data was processed using FATHOM software. Soundings were collected at 2.0 metre intervals using 100° sounding fans. Contours of 0.25 metre intervals. Bed material descriptions are not visibly detected.



58400 N 58500 N 58600 N 281900 E 282000 E 282100 E