

MARINE INFORMATION 2023 UPDATE

Includes our new mooring for ships up to 255m

Ship Size Limits

Note that this is an indication – exact restrictions will depend on ship manoeuvrability and tidal conditions. Simulations for MS 0 being carried out in October 2023 will confirm initial tidal and weather restrictions for this berth.

Ship Length	Draft	Berth	Manoeuvre	Tender
0-90m	6m	MS 1-2 or MS 3-5	Swing at Higher Ferry, ideally at slack water, but more manoeuvrable ships have flexibility.	150m 1min calm water tender run to Town Jetty
90-160m	6m	MS 1-3		
160-255m	9m	MS 0	Swing offshore and come astern to Mediterranean Moor to MS 0 buoy. Ideally arrive at slack water.	600m 4 min calm water tender run to Town Jetty
>255m	9m	Offshore anchorage	n/a	1-1.5NM 10-15 min tender run to Town Jetty

Our Moorings

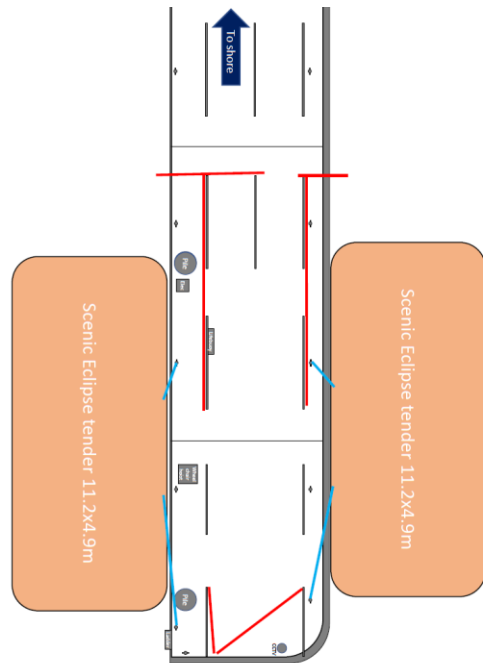
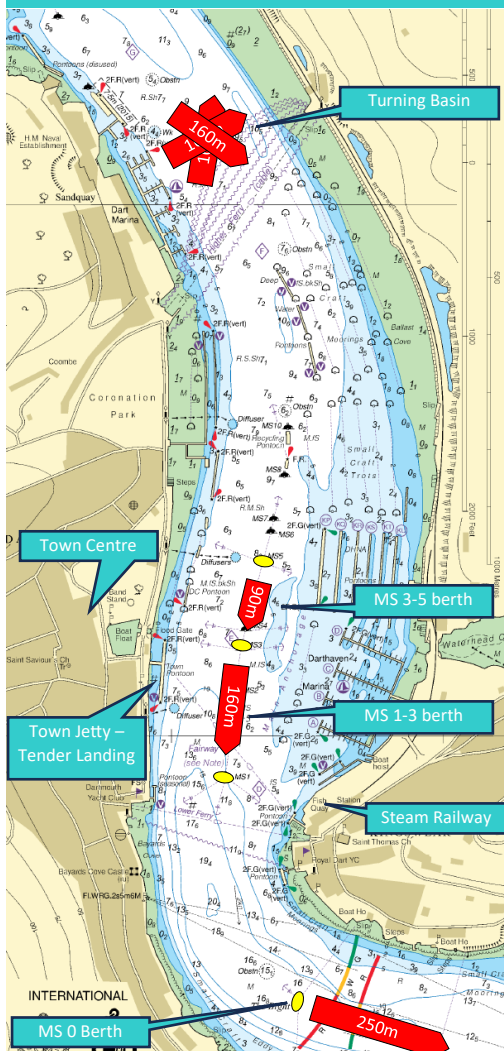
We moor cruise ships on Admiralty type buoys. MS 1-2, MS 1-3 and MS 3-5 are all fore-and-aft moorings midstream in the river opposite the town, less than a minute's tender run from Town Jetty.



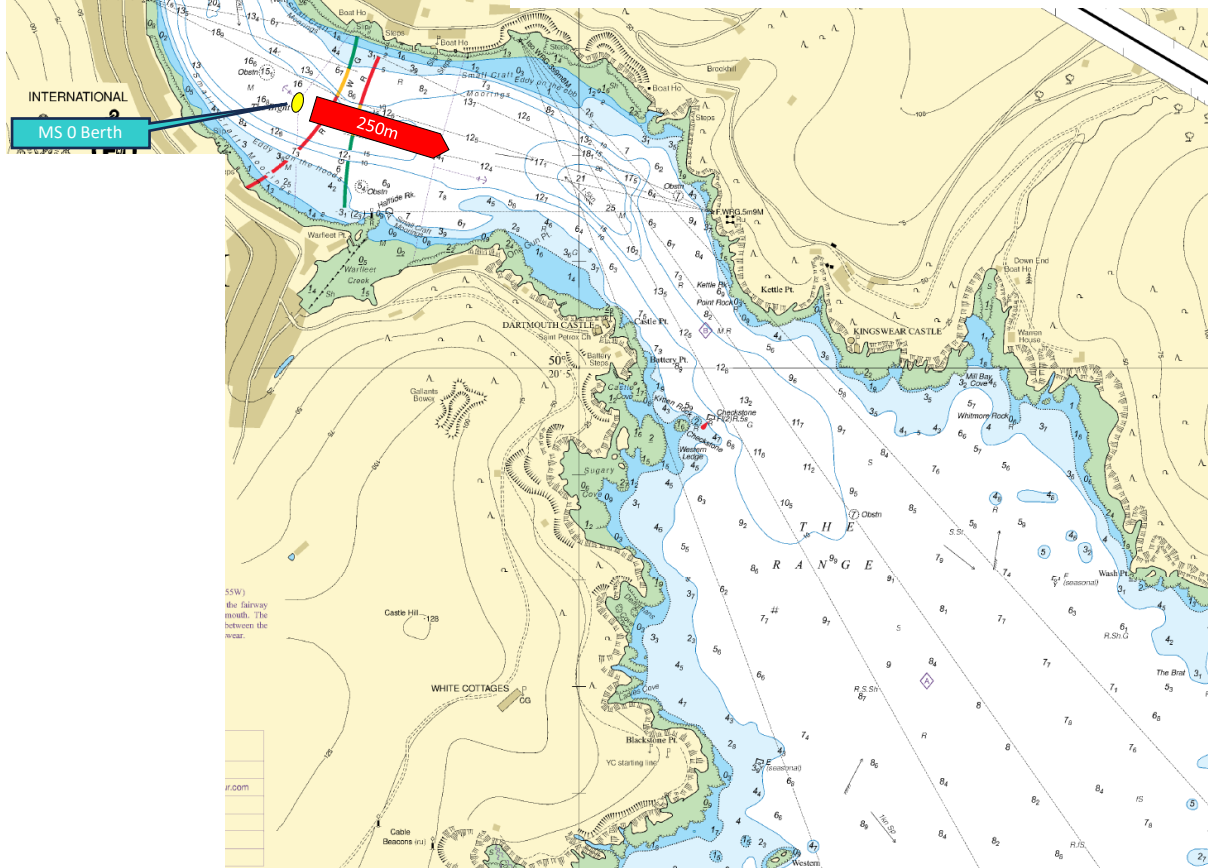
The exact design of MS 0 is being finalised, but it will also be a large mooring buoy, to which the vessel's stern lines will be secured. The ship's bow will be held on the ship's own anchors in a Mediterranean mooring pattern. This mooring is just to the south of the town, around a 4 minute tender run from Town Jetty in smooth water.



Key Locations



Town Jetty South End – Security area and tender landing



Tender Pontoon & Shore facilities

The main tender pontoon is the south end of the Town Jetty, in position 50°21.03' N 003° 34.38'W. Two berths are available for tenders. The jetty is a large floating pontoon, with a freeboard of 1m. We provide an additional lower freeboard float for vessels using Zodiacs for tendering. Ample cleats are provided, and the pontoon is fully fendered, and fitted with handrails, lighting and CCTV.

The tender pontoon has ample space for security checks, tourist information and greeting staff, and for queuing for tenders back to the ship. A tent is provided to give shelter. It is an approved ISPS facility. The jetty is accessed via a large ramp to the quayside, this is wheelchair accessible, though it is a little steep at low tide.



Guest & crew facilities

Town Jetty is right in the centre of town, with shops, restaurants, cafes, bars, museums, galleries, ATM, taxi rank, public toilets and visitor information centre within 100m.

Tour departures

Tours depart from coach parking spaces at the top of the bridge, with space to muster guests adjacent. As coach parking is limited, we would recommend that most tours should look to depart by steam train, riverboat, paddle steamer, small boat or by foot. We will work with your tour operators to ensure that all runs smoothly.

Other landing points

If two ships are in port, we may use a second landing facility on Double Steps Pontoon, adjacent to Town Jetty, to avoid crowding and conflict.

It is possible to land passengers at Kingswear Jetty or at Greenway Quay – this can be useful for certain tours.



Note that this info sheet is temporary – updates will be provided following our simulation trials. Please contact harbourmaster@dartharbour.org for details

Useful Information

Pilotage	Compulsory for vessels over 50m. Pilots board ~ 3NM off the harbour entrance				
Pilotage Time	90 minutes from Pilot to 1 st tender with swing at higher ferry (MS 1-3) 60 minutes from Pilot to 1 st tender mooring at MS 0				
Tugs	Various options available with around 48 hours notice. Tugs are compulsory for larger vessels – exact details will depend on the vessel size, manoeuvrability, tidal and weather conditions. Commonly used tugs include:				
	Tug	Operator	Base port	Type	Bollard Pull
	Christine	TMS	Dartmouth	Twin-screw	12.8T
	Prince Rock	Cattewater Harbour	Plymouth	Twin-screw	18 T
	Mercia	A&P	Falmouth	Tractor	43 T
	Canis	Fowey Harbour	Plymouth	Tractor	32 T
Security	Dartmouth is certified to ISPS standards by the UK MCA. Two security guards are normally provided, with searching normally done onboard the ship				
Agents	Services available from all major UK agents				
Speed Limit	6 knots				
Hydrography	Surveyed annually. Riverbed is stable				
Ship's tenders	May be used. The pontoon works well with all standard tenders and zodiacs				
Shore tenders	Available. Capacities from 12-400 passengers. All vessels have appropriate licenses from the MCA and/or Dart Harbour				
Water sports from ship's marina	Cruise lines may operate kayaking and paddleboard type activities from the ship using their own equipment. We can provide suggested routes. It is also possible to use submarines, jetskis and sailing boats from the ship, subject to a risk assessment				
Helicopter tours	These are normally possible from the ship or a shore helipad. We need permission from the CAA and the Royal Navy.				
Garbage	Limited garbage collection is available by barge. This will be charged per skip, plus a fee for the barge.				
Bunkering	Limited quantities of MGO is available by barge. Potable water is not available				
Maintenance	Crew drills, fresh water wash down, touch up painting, paint raft and hotwork are all acceptable with permission from the harbour office				
Berthing Policy	Priority by order of receipt of booking request. There is a limit on the number of calls per annum, to avoid causing conflict in the town.				
Capacity limit	There is a 2500 passenger capacity limit, reduced to 1500 in July/August				
Overnight calls / late sails	Are allowed, with some restrictions				
Multiple ships	Two or three ships may berth in one day, subject to sizes and arr/dep times				
Environmental restrictions	No discharge of black/grey water in the river. Ballast operations only with permission. Open loop scrubbers may not be used in the river; hybrid scrubbers must be in closed loop mode. Vessels are requested to avoid making visible smoke where possible				
Noise restrictions	Excessive noise on open decks should be avoided. Safety and operational announcements are fine, as is a deck party on departure before 10pm.				
Emergency Response	Torbay Hospital is around 10 miles away, with full facilities Dart Harbour has a cruise ship emergency and evacuation plan in place, with regular drills involving emergency services				
Contact us	harbourmaster@dartharbour.org +44 (0) 1803 832237 www.dartharbour.org				