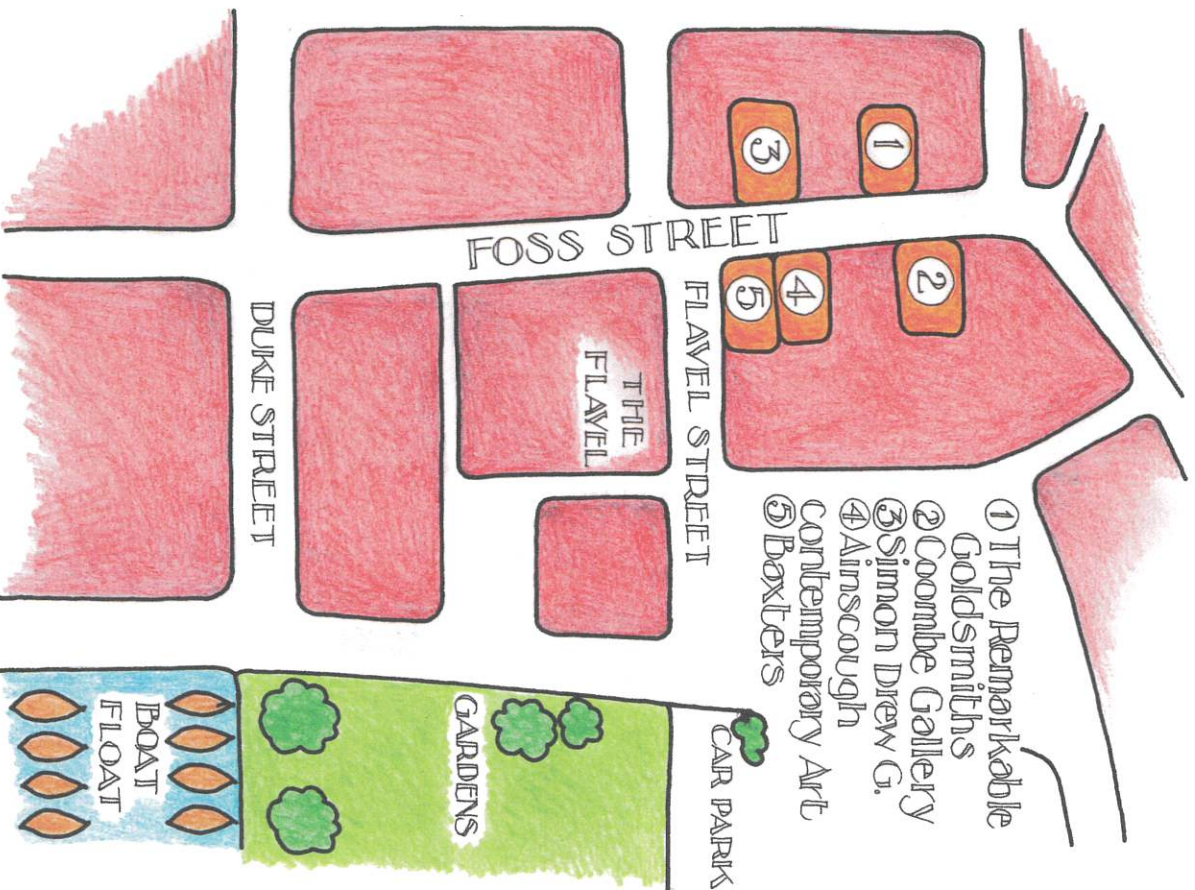


FOLLOW OUR TRAIL MAP TO SEE ALL THE EXHIBITIONS

DARTMOUTH GALLERIES SPRING EXHIBITIONS

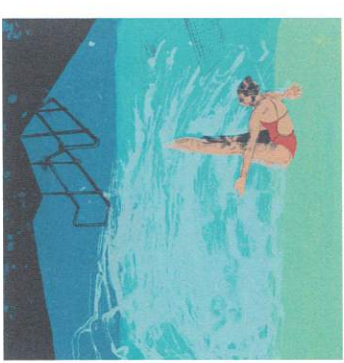
OPENING NIGHT FRIDAY MAY 24TH FROM 6PM



YOU CAN SEE MORE INFORMATION ON THE GALLERIES OWN WEBSITES
SEE THE GROUP INSTAGRAM & FACEBOOK PAGES - DARTMOUTH GALLERIES



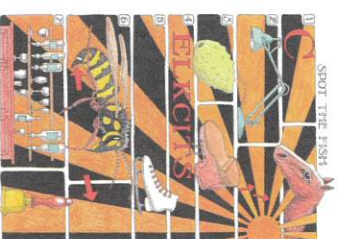
Ainscough Contemporary Art



Baxters



Coombe Gallery



Simon Drew Gallery



The Remarkable Goldsmiths

EXHIBITIONS

AINSCOUGH CONTEMPORARY ART

EMMA JEFFRYE'S new paintings
ANNABEL FAIRFAX SWA new paintings
RAMF new ceramics

14 Foss Street
acaag.co.uk • art@acaag.co.uk • 07944 731337
instagram.com/ainscoughcontemporarygallery



BAXTERS

TWELVE AT NUMBER 12

A mixed exhibition featuring 10 artists and makers new to Baxters and 2 favourites.

Paintings from Lucy Davies, Heather Howe & Lindsay Madden
Screenprints from Anna Marrow
Ceramics from Helen Harrison, Caroline Nash & Ceri White
Sculpture from Jon Barrett Danes, Anna Noel, Cat Santos & Keeley Traae
Glass from Emmy Palmer
Exhibition continues until Friday 14th June.
12 Foss Street
baxtersgallery.co.uk
info@baxtersgallery.co.uk • 01803 839000
instagram.com/baxtersgallerydartmouth

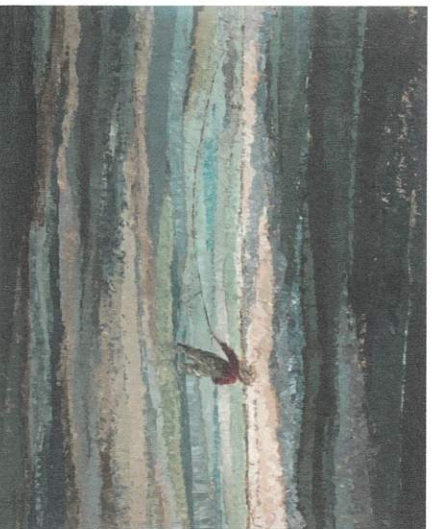


COOMBE GALLERY

VENEZIA - The Lagoon and her Islands 20th ANNIVERSARY EXHIBITION

A group exhibition in collaboration with The Seahorse restaurant. Lagoon paintings highlighting awareness of perils to the fragile wetlands by Allison Zurlini. Watercolours of waterways and daily life by Paul Riley. Oil paintings of the ethereal light of Venice by Tom Rickman. Beautiful handblown glassware by Wave Murano Glass studio artist Benjamin Lintell.

20 Foss Street
coombegallery.com
mark@coombegallery.com • 01803 835820
instagram.com/coombegallery



EXHIBITIONS

SIMON DREW GALLERY

A COLLECTION OF SPOTS by Simon Drew

Simon Drew's 'spot' puzzles have been driving people to drink for over twenty years now. Appearing annually in 'The Spectator' magazine's Christmas issue, as well as on his cards and in his books, Simon's rebus puzzles challenge you to find syllables from his drawings and create words and phrases on a multitude of themes. Taxes the brain; delights the eye.

Also we will exhibit the extraordinary new Dodo Table made by Colin Kellern. This is one of those rare examples of Colin's ingenuity and total originality.

The exhibition of 'spot' original pictures continues until Monday 17th June

13 Foss Street
simondrewgalleryceramics.co.uk
simon@simondrew.co.uk • 01803 832832
instagram.com/simondrewgallery



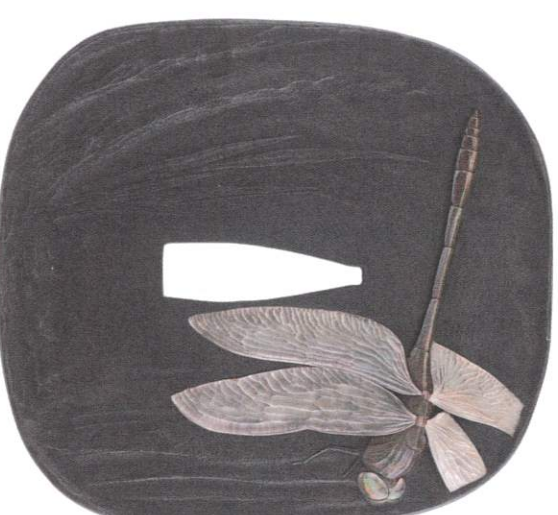
THE REMARKABLE GOLDSMITHS

JAPANESE ANTIQUE CRAFT - a Personal Journey

The Remarkable Goldsmiths are exhibiting a selection of pieces from our personal collection of Japanese Art and Craft work. These historical works give an insight into the tools and techniques we use in our craft today.

Images: Contemporary Gold prize winning Tsuda, Iron, Silver Bronze and Mother of Pearl, Ford Hallam and 2022 Kogo Inense Container, Lacquer and Mother of Pearl, Maker unknown, 18th century

17 Foss Street
theremarkablegoldsmiths.co.uk
info@theremarkablegoldsmiths.co.uk
01803 473179
instagram.com/isabella_day_goldsmith



You are welcome to visit these galleries for the open evening on the 24th May - "Galleries Night" is a bit of a Dartmouth institution.

Every gallery will have been transformed in the days leading up to the openings, showing all new work from a mix of artists and makers.

Do also visit throughout the period of the shows when it may be a little quieter - most of the exhibitions continue for 2-3 weeks. Each show has an individual theme and look so you are sure to find something different. You will see paintings, sculpture, ceramics & jewellery.